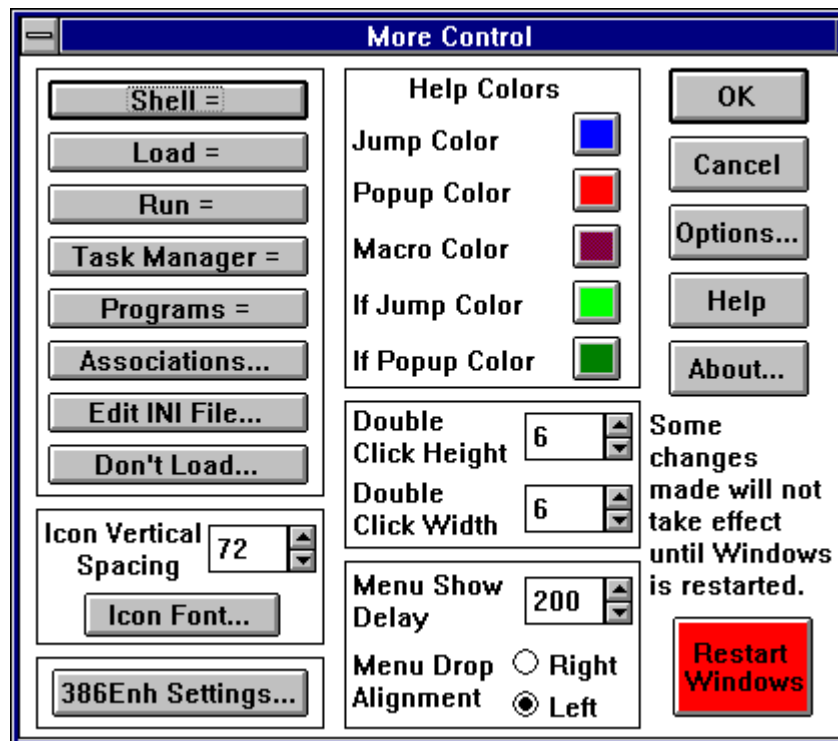


MORE CONTROL

To get help on a function, simply click on the control you wish information about.



Registering More Control - More Control 2.0 is a shareware program. As such, if used for more than 30 days you are obligated to pay for it. For information on how to register the program, see either the readme file or orderfrm.txt.

Uninstalling More Control - to uninstall More Control, delete the files morecon.cpl, morecon.hlp, setfont.exe, setfont.inf (if present), cpaddin.cpl, cpapps.inf (if present) and mcspin.dll from your disk. These files should be either in your Windows directory or your Windows system directory. You should also disable SetFont if enabled before deleting More Control.

Allows you to modify the associations list stored in win.ini. Associations may be added, edited or deleted.

Adjusts the amount of movement of the mouse cursor allowed between clicks for the clicks to be considered a double click.

The settings in this section allow you to set the various colors used by the Windows help engine to display things such as the hypertext links and definitions. The two settings of most concern are described below.

Jump Color - this is the color used to indicate keywords which jump to new help topics.

Popup Color - this is the color used to indicate keywords which popup a small box of text describing or defining something.

Allows you to choose the font to be used to display the titles placed under icons. For this setting to be active, you must have the SetFont program enabled and the file setfont.exe in your Windows directory. To enable SetFont, use the 'Options...' button.

Controls the distance (in pixels) maintained between icons. Essentially the same as the icon spacing control in the desktop dialog but controls vertical rather than horizontal spacing.

Allows you to edit the load line setting stored in the WIN.INI file. Any programs listed on this line will be started as icons on the desktop when Windows is started.

Controls the delay between selecting a submenu and Windows displaying it.

Determines whether drop-down menus are aligned on the right or the left of the menu command.

Allows you to edit the extensions considered to be applications by Windows.

Allows you to edit the run line setting stored in the WIN.INI file. Any programs listed on this line will be started as windows when Windows is started.

Determines what program is run on Windows startup as the shell. Unless this has been changed, this program would be Program Manager. Of course, given the deficiencies of Program Manager we highly recommend you check out our shareware Program Manager replacement, Sloop Manager, available on a BBS near you. Or, the retail version of Sloop Manager, CEO:Desktop Manager (see ceopress.txt for full details).

Determines what program is brought up when you double-click on the desktop. Normally, this program would be the Windows taskman.exe program.

386 Enhanced Settings

DOS Prompt Exit Instructions - If this setting is enabled, when you start the MS-DOS prompt a message box appears with instructions on how to exit and switch away from the MS-DOS prompt. Disable this setting if you do not want to see the message. Note that this setting will have no effect if you are running the MS-DOS shell using a batch file.

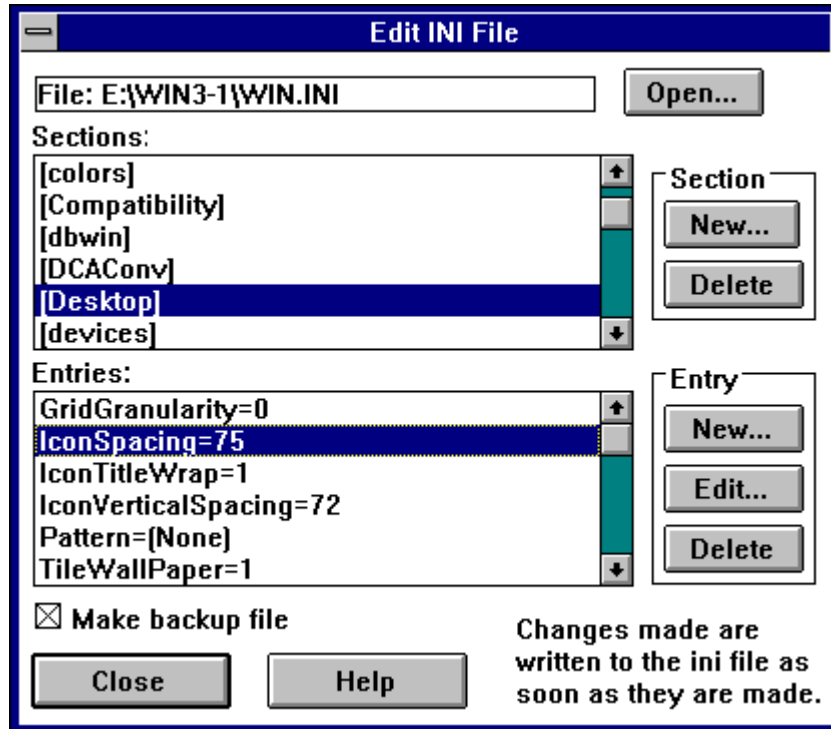
File Manager System Changes - Indicates whether File Manager automatically receives messages anytime a non-Windows application creates, renames, or deletes a file. If this setting is disabled, a virtual machine can run exclusively, even if it modifies files. Enabling this setting can slow down system performance significantly.

Local Reboot - Specifies whether you can press CTRL+ALT+DEL to terminate applications that cause an unrecoverable error (UAE) in 386 enhanced mode. If this setting is enabled, you can terminate the offending application without restarting the rest of the system. With it disabled, pressing CTRL+ALT+DEL will reboot the computer.

All VM's Exclusive - If enabled, this setting forces all applications to run in exclusive full-screen mode, overriding all contrary settings in the applications' program information files (PIFs). Enabling this setting might prolong the length of the Windows session when you are running network and memory-resident software that is incompatible with Windows.

Edit INI File

From this dialog you may easily edit any of the Windows ini files. For information on a control, click on the control.



Note that there is a problem when editing the system.ini file. The system.ini use a non-standard convention in that more then one line in a section makes use of the same key word. In this case, the [386enh] section makes use of the keyword 'device' multiple times. Due to this, do not attempt to edit the device entries using the INI file editor. Instead, make use of a program such as Notepad.

If this checkbox is selected (checked), then whenever an ini file is opened for editing a backup file is made of it. This backup has the same name as the ini file but with a bak extension.

Brings up a dialog from which you can select the initialization (ini) file to be edited.

This listbox displays all sections in the loaded ini file. Clicking on a section heading will cause all entries in that section to be displayed in the entries listbox.

This listbox displays all entries that are included under the section heading selected in the sections listbox.

This button allows you to add a new section to the ini file. Once created, you may add new entries to the new section using the entry new button.

This button deletes the section currently selected in the sections listbox. All entries associated with the section are deleted and the section heading removed from the ini file.

Using this button you may add new entries to a section. A dialog box is displayed in which you may enter the key word (word on left of =) and the value (word on right of =).

Clicking on this button will allow you to edit the currently selected entry. You will be able to change both the key word and the value.

This button deletes the currently selected entry in the entries listbox.

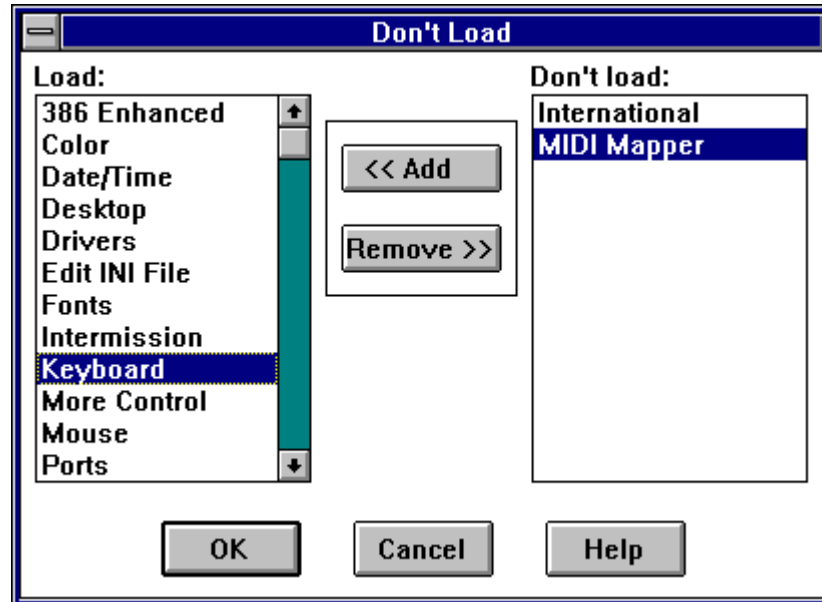
Removes the selected Control Panel module from the 'Don't load' listbox and places it in the 'Load' listbox.

Removes the selected Control Panel module from the 'Load' listbox and places it in the 'Don't load' listbox.

The close button terminates your ini file editing session. Note that any changes made to ini files will have already been made as changes are saved as they are made.

Don't Load

Using this dialog you may specify which Control Panel modules are loaded. For information on a control, click on the control.



Note that if you specify More Control not to be loaded, you will have to manually edit the control.ini file to change what modules are loaded.

All modules listed in this listbox will be loaded into the Control Panel.

All modules listed in this listbox will not be loaded into the Control Panel.

Options

Edit INI file icon - Turning on this option will cause an additional icon to appear in the Control Panel. Double-clicking on this icon will cause the edit ini file dialog to be launched. From this dialog you may edit ini files without having to go through the More Control dialog.

Windows Setup icon - Turning on this option will cause an icon for the Windows Setup program to be placed in the Control Panel. This icon is provided simply for convenience in launching Setup.

Use WIN.INI font settings - This option is used to tell Windows to use the icon title font which has been set in the win.ini file. For most cases you should leave this option set on. However, if you wish to use an italic font you must use the SetFont program. Or, in some display modes truetype fonts do not display correctly unless you use the SetFont program. Note that Program Manager does not work that well with the SetFont program due to the way Program Manager is designed. Just another reason to look at CEO:Desktop Manager which works fine with SetFont.

Use SetFont program - Activating this option adds setfont.exe to the load line of your win.ini file. This is necessary for the icon title font to be set to an italic font, or, on some systems, a truetype font. It is recommended that you do not use this setting if using Program Manager as the Windows shell as SetFont and Program Manager do not work too well together due to the design of Program Manager.

Accepts all current settings in the dialog and then closes the dialog.

Close the dialog without making any changes to the Windows system settings.

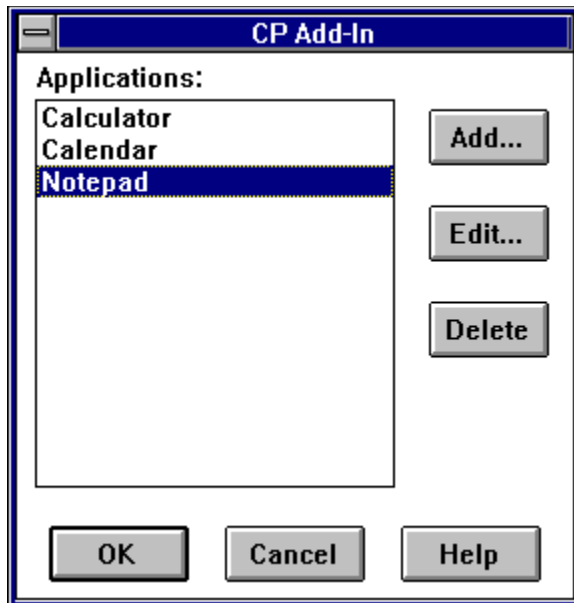
The help button brings up this help file that you are currently looking at.

The 'Restart Windows' button does just what it says, it restarts Windows. Any settings changed in More Control will be saved.

The 'About' button brings up a dialog with some information about More Control.

CP Add-In

CP Add-In allows you to add any application to the Control Panel dialog. Once added, an icon will appear in the Control Panel for launching the new application. For more information, click on each control in the dialog below.



After using CP Add-In you should exit and restart the Control Panel before doing anything else from it.

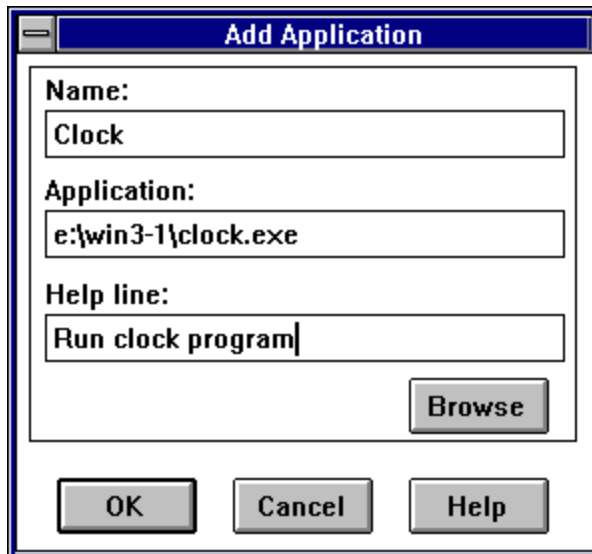
Note that when are done adding applications you may eliminate the CP Add-In icon from the Control Panel through the use of the 'Don't Load' dialog in More Control. Simply specify CP Add-In not to be loaded. If you later wish to access CP Add-In to modify the list of added applications, simply use the 'Don't Load' dialog again to have it loaded.

To un-install CP Add-In, delete the files cpaddin.cpl and cpapps.inf (if present) from your Windows system directory.

This listbox lists the assigned names of all the applications which will be added to the Control Panel. Added applications will generally appear using the applications icon unless the app is a DOS program. In that case, the application will appear using a generic icon.

Add/Edit Application

This dialog allows you to add or edit applications to be added to the Control Panel. If you accessed this dialog through the Edit button, the dialog will already be filled with the information on the currently selected application. Click on the controls for more information.



The image shows a Windows-style dialog box titled "Add Application". It contains three text input fields: "Name:" with the text "Clock", "Application:" with the text "e:\win3-1\clock.exe", and "Help line:" with the text "Run clock program|". A "Browse" button is located to the right of the "Application:" field. At the bottom of the dialog are three buttons: "OK", "Cancel", and "Help".

The name entered here will be the name used within the Control Panel.

The application field needs to specify the full path and file name of the application.
For example, c:\windows\calc.exe.

The help line entered here will be displayed in the Control Panel's status bar whenever the application is selected. You do not need to specify a help line.

The Browse button will bring up a dialog from which you may choose the application to be added to the Control Panel.

The Edit button allows you to change the properties of an application already added. Click on the application you wish to edit in the application listbox. Then click on the Edit button. For more information click on the Add button.

The Delete button will remove the application from the list of applications to be added.

